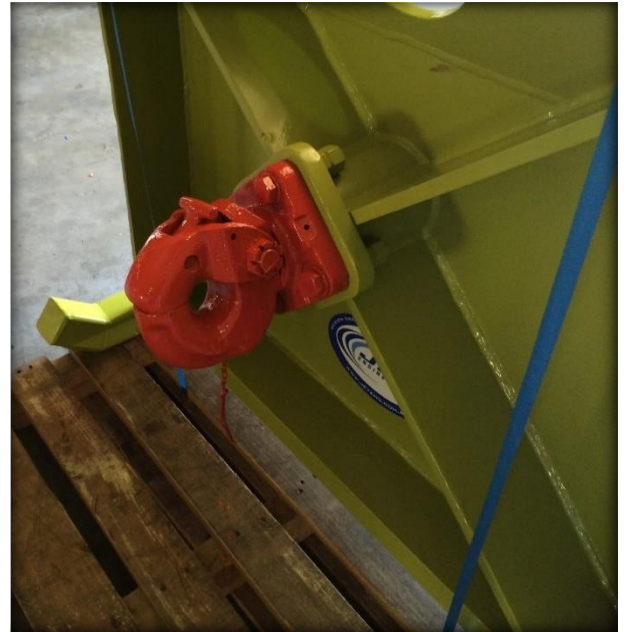


QDS PARROTS BEAK

The QDS Parrots Beak was designed by JET Group with safety & ease of function in mind. The QDS Parrots Beak is RPEQ Certified, so to guaranty quality for mine site compliance.

The QDS Parrots Beak features a 50T Swivel Pintle Hook and 2 x 15 tonne lugs for attaching safety chains. It also features legs to make unit free standing and an adaptor frame to allow attachment of Bobcat attachments (dual purpose)

SUITABLE FOR THE FOLLOWING MACHINES:	WLL
EIMCO EJC130, ED7	7.0 Tonnes
SANDVIK LS170	7.0 Tonnes
COALTRAM CT08	8.0 Tonnes
EIMCO ED10	10.0 Tonnes
JUG-A-0 Z1060, Z1210	10.0 Tonnes
SANDVIK LS190	10.0 Tonnes
COALTRAM CT10	10.0 Tonnes
DBT FBL 10	10.0 Tonnes
COAL TRAM CT13	13.0 Tonnes
DBT FBL 15	15.0 Tonnes



QDS PARROTS BEAK

FEATURES	SPECIFICATIONS
50T Swivel Pintle Hook	ATM:.....20 tonnes
2 x 16T Weldon lifting lugs (1 ea. side)	Tare Mass:.....600kg
	Dimensions:.....Length:.....1222mm
	Width:.....801mm
	Height:.....1239mm

JET HIRE

- ★ NDT Tested on an annual basis
- ★ Plant Safety File to be supplied upon Hire
- ★ Risk Assessment to be supplied upon Hire

